

- GB INSTRUCTIONS**
- D BEDIENUNGSANLEITUNG**
- F I MODE D'EMPLOI**
- I ISTRUZIONI**
- E INSTRUCCIONES**
- PL INSTRUKCJE**

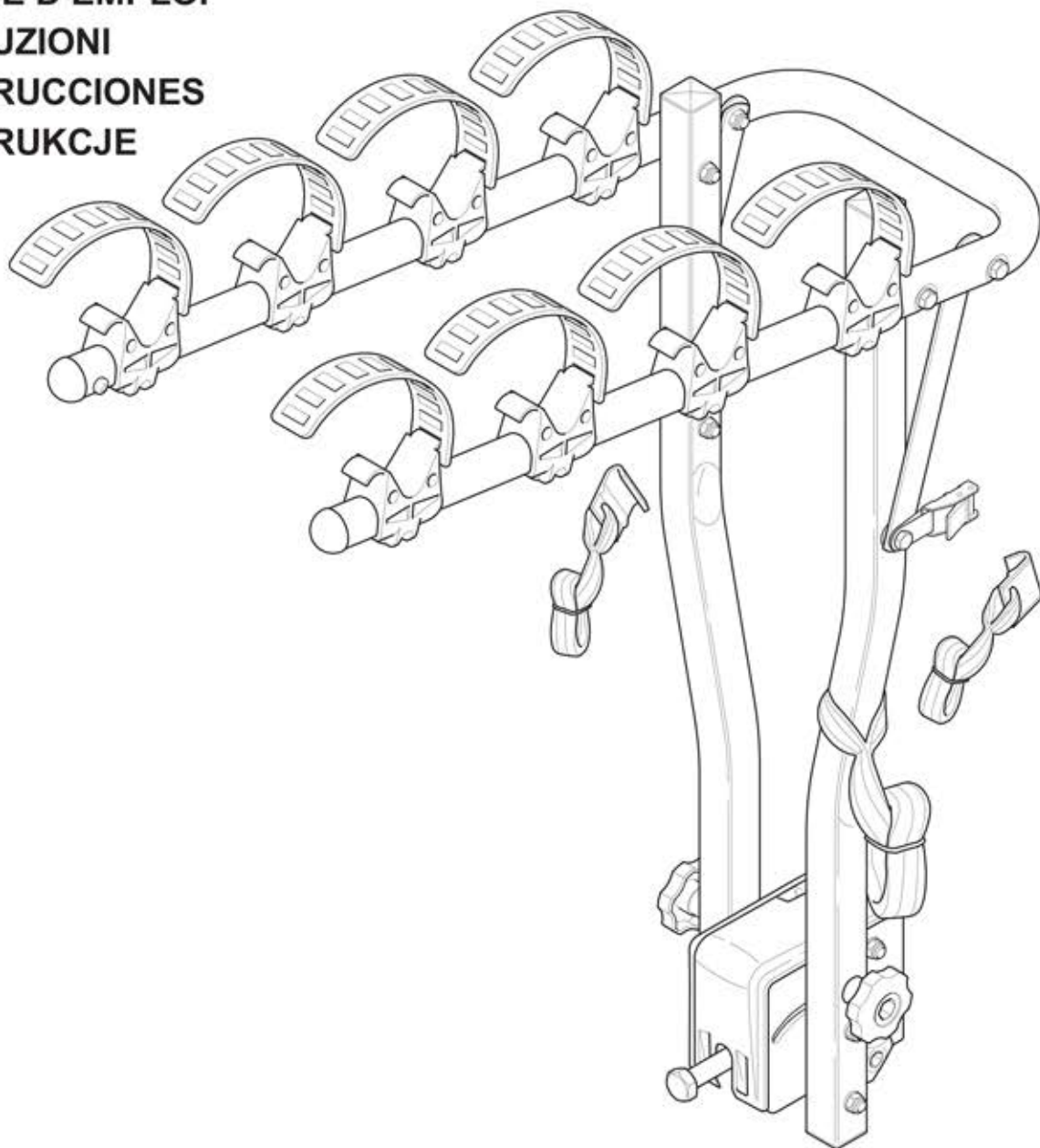
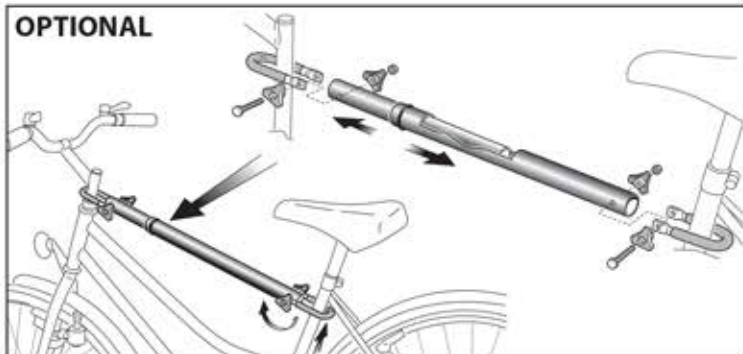
**OPTIONAL**

Fig. A

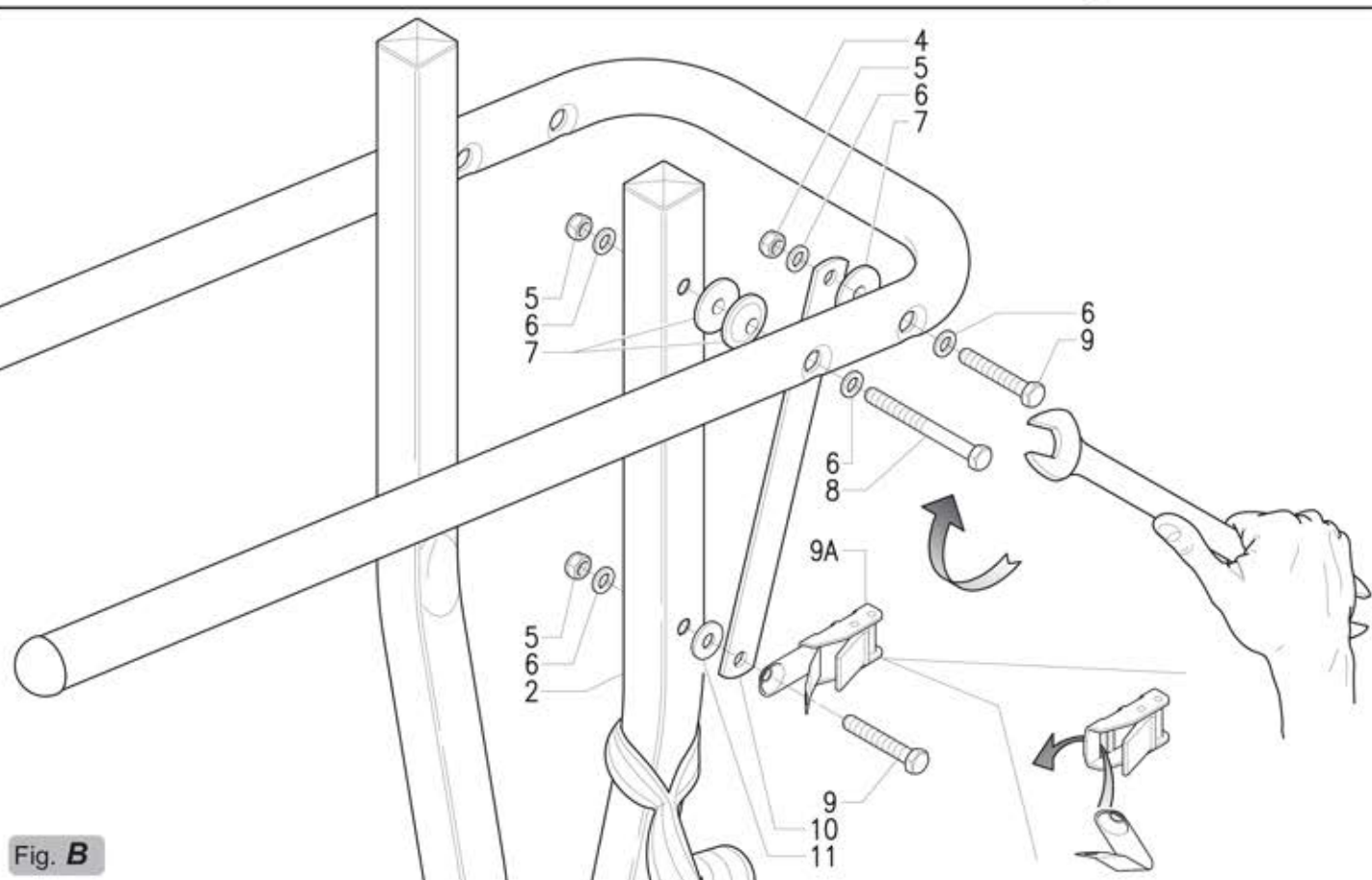
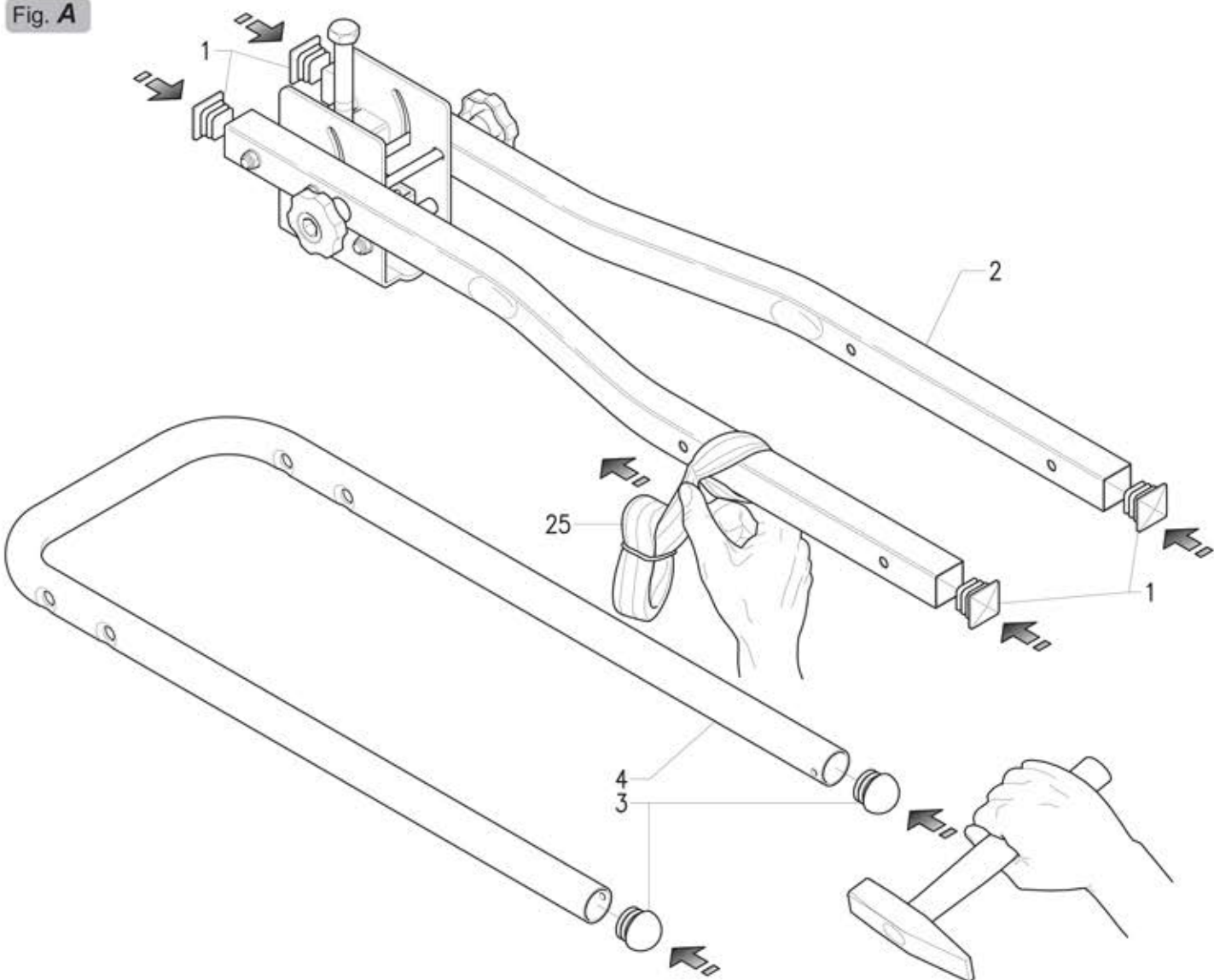


Fig. B

Fig. C

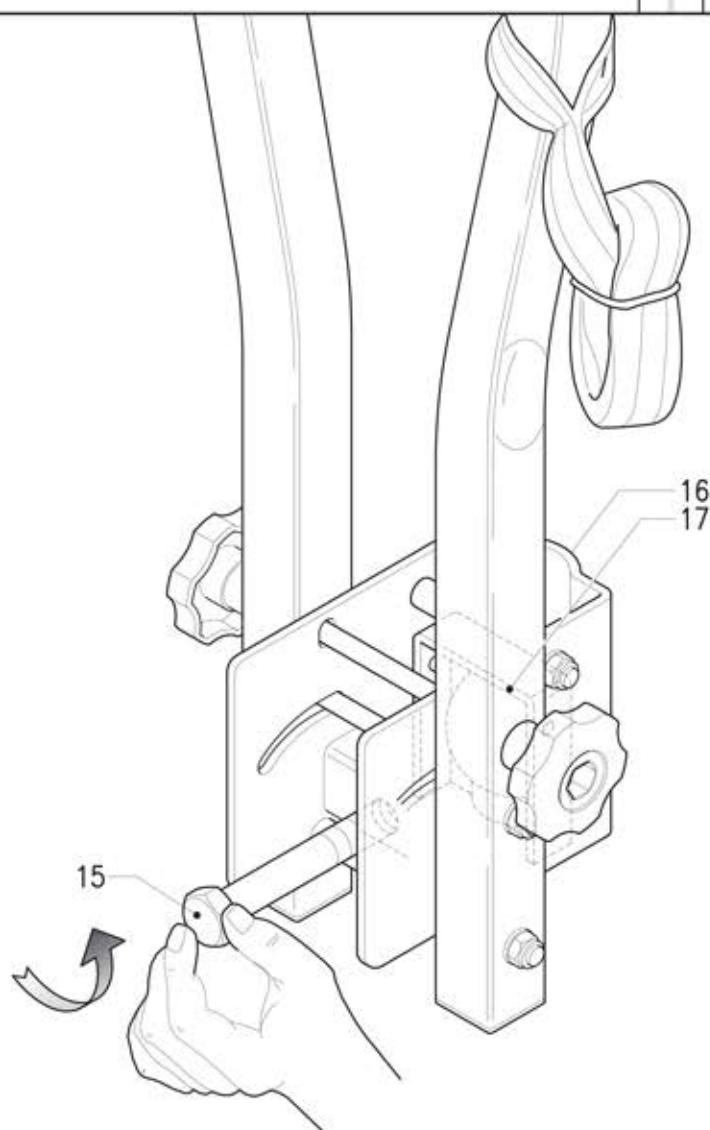
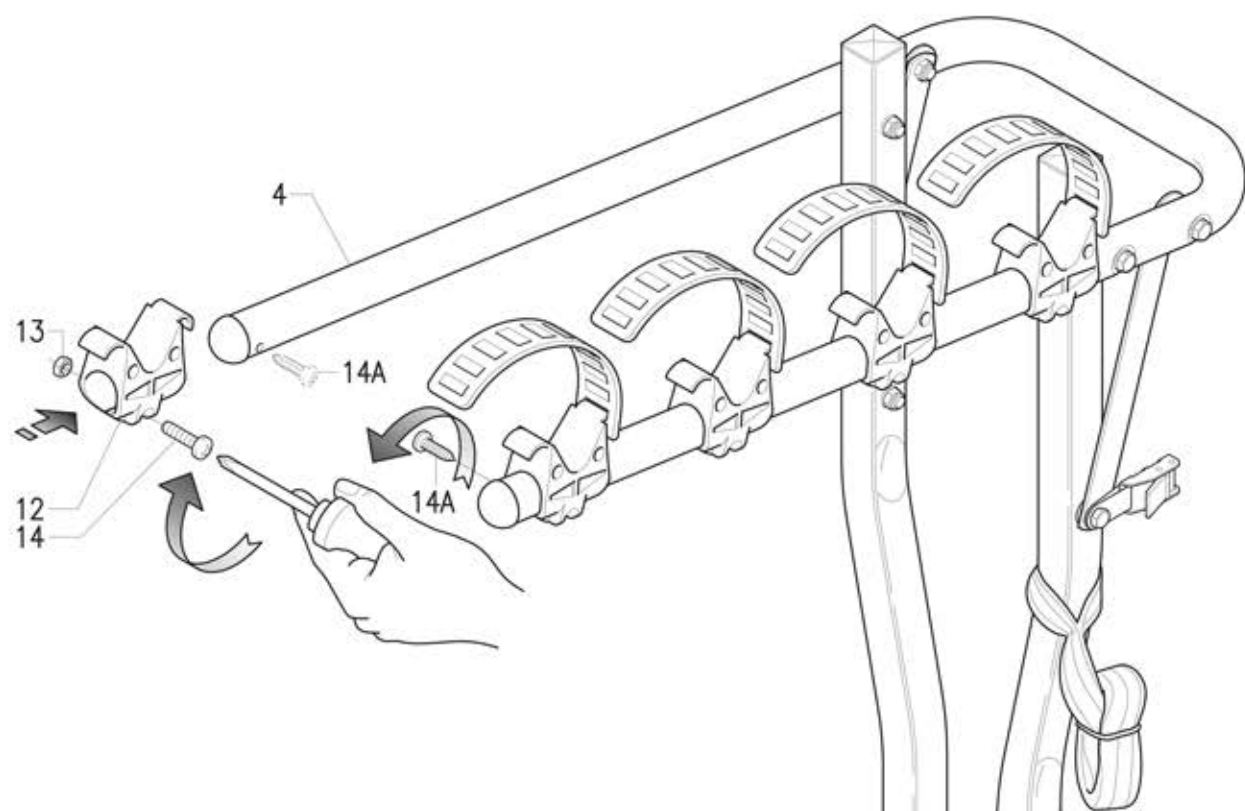


Fig. D

Fig. E

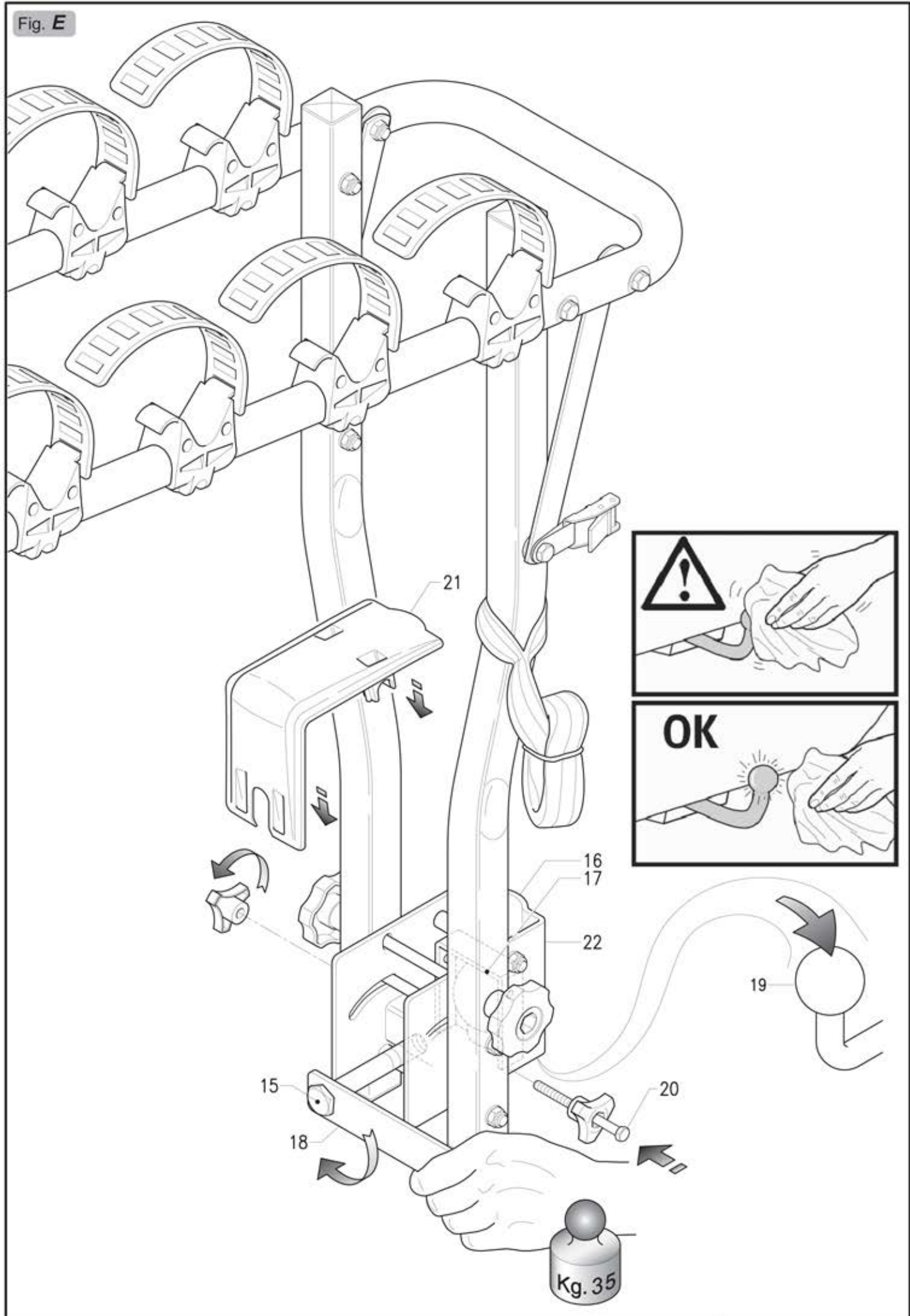


Fig. F

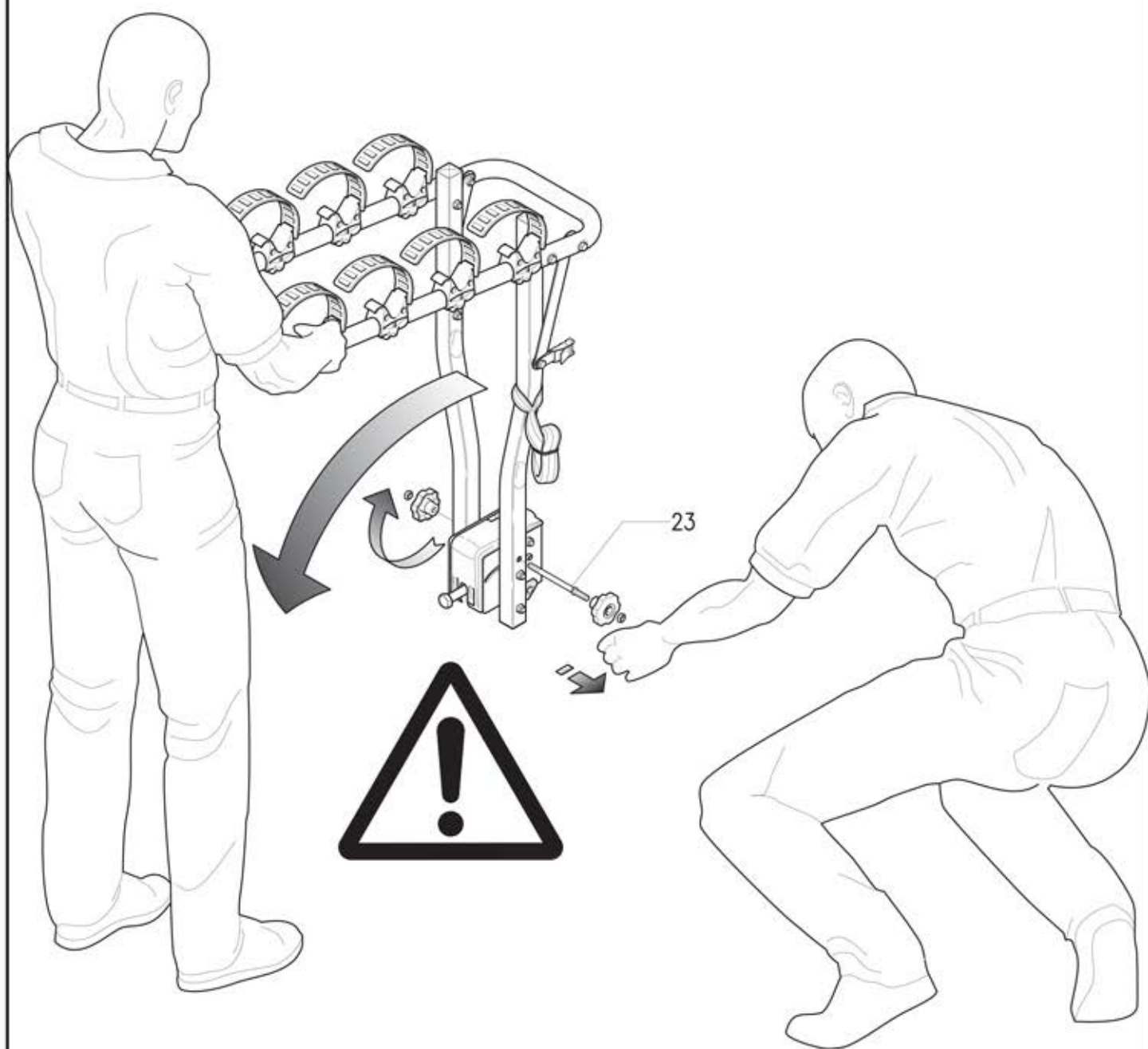
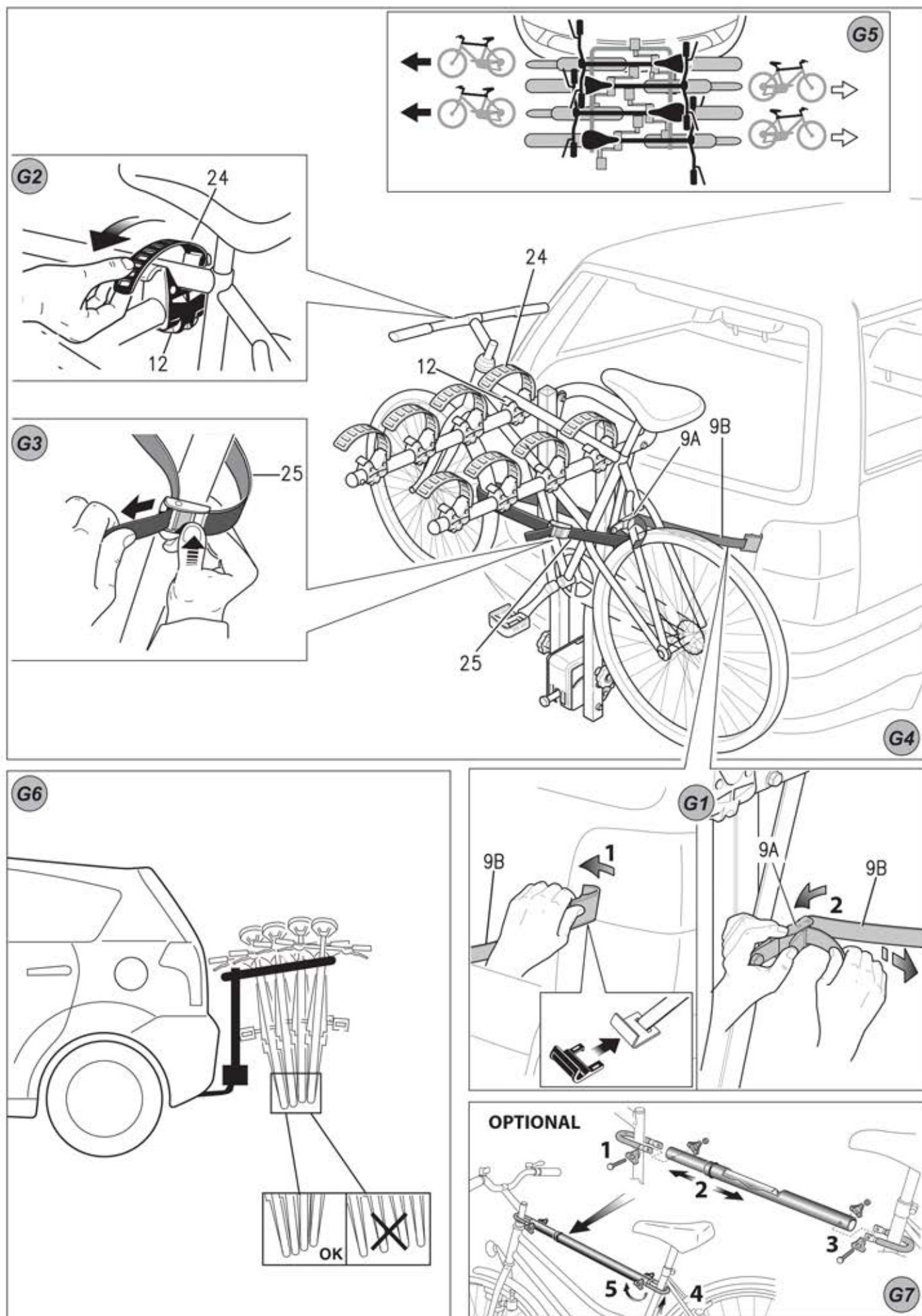


Fig. G



ASSEMBLY and USER INSTRUCTIONS

Please follow the instructions below very carefully every time you use this product. The bike rack is a safe product if used correctly. If used improperly it may cause damage to you and those following you on the road.

- 1) Insert the plugs **1** in the square bearing tubes **2** (Fig. **A**).
- 2) Insert the plugs **3** in the bike fixing arch **4** (Fig. **A**).
- 3) Fit the bike fixing arch **4** to the square bearing tubes **2** with the screws **8-9-9A**, washers **6-7-11**, tie-rods **10** and nuts **5** (Fig. **B**).
- 4) Fit the bike clamps **12** to the bike fixing arch **4** and fix with the screws **14-14A** and the nuts **13** (Fig. **C**).

HOW TO INSTALL THE BIKE RACK ON THE TOWING HOOK

- 5) Unscrew the screw **15** until the hemisphere **17** is completely open (Fig. **D**).
- 6) Rest the open hemispheres **16-17** on the ball of the tow hook **19** (Fig. **E**).
- 7) Tighten the screw **15** with the provided wrench **18** until you lock the hemispheres **16-17** to the tow hook ball **19** (the torque should be at least **35 kg.**) (Fig. **E**).

Important: The final bike rack installation stage envisages fitting the safety screw **20** (Fig. **E**) to avoid any accidental openings.

- 8) Fit the cover **21** on the fixing block **22** (Fig. **E**).
- 9) Insert the hooks of the lashing straps **9B** between the hatch and the car frame, then thread the straps through the buckles **9A** ensuring that they are inserted correctly (Fig. **G1**).

Important: Give the straps a good tug to check for tightness. Check the straps to ensure they are secure before starting and at each stop during the trip.

POSITIONING and FIXING the BIKES ON THE BIKE RACK

- 10) Fit the rubber straps **24** to the bike clamps **12** (Fig. **G2**).
- 11) Place the bikes on the bike clamps **12** and use the rubber straps **24** to secure them (Fig. **G2-G4**).

ATTENTION: the straps **24** are not suitable for securing the bikes to the bike rack: they are only for keeping them in the right position during the trip.

When you load the bikes, alternate them as illustrated in fig. **G5**; if you have difficulty positioning them, see if it is possible to tilt the handlebars. The bikes may protrude at the sides from small vehicles. If this happens, remove the front wheel.

Attention: no part of the bike, and especially not the pedal, must come into contact with the car's bodywork or rear window.

Ensure that the bicycle tyres are not placed near the exhaust pipe. Block the handlebars, wheels and pedals to prevent inappropriate movements; when making these adjustments take care not to damage the paintwork of the car.

If you have any difficulty fixing women's bikes or MTBs because they do not have a crossbar, you can purchase an adapter bar from the dealer to replace the crossbar (Fig. **G7**).

- 12) Use the strap **25** to secure the bikes correctly to the bike rack (Fig. **G3-G4**). Check that the belt is mounted correctly by pulling on it.

IMPORTANT SAFETY INFORMATION

The bikes must be secured forcefully to the bike rack for safe use. If the belt **25** is not used correctly, the bikes are not secured and may come off the bike rack with serious consequences.

RACK ANGLE

- 13) To tilt the bike rack, remove the stop screw **23** and support the rack while tilting (Fig. **F**).

ATTENTION!!

The presence of two people is recommended at the moment in which you remove the stop screw **23**: one person removes the screw while the other supports the bike fixing arch; if this is not supported adequately, the sudden fall of the bike rack can cause injuries for people nearby.

ATTENTION – SAFETY REQUIREMENTS

- Scrupulously comply with the carrying instructions highlighted on the bike rack.
- Never exceed the permitted capacity of the towing hook installed. The combined weight of the bike rack and the load must never exceed the permitted towing hook capacity. Keep the towing hook ball surface clean from dirt and oil.
- Remove from the transported bikes children's seats, transport baskets, rain covers or other elements that could get lost or that could obstruct the passage of air.
- The bike rack is suitable for bikes with standard frames.
- Ensure that the bike rack is fitted correctly on the towing hook and that the bikes are secured as instructed. When on the road, respect the highway code speed limits and pay attention to the road conditions to prevent jolts.
- Pay attention that the loaded bike rack may change the driving behaviour of the car while braking, due to side-winds and in curves.
- To prevent vehicle damages the luggage compartment shall be opened manually if the vehicle is equipped with automatic boot/tailgate opening function.
- Check the fastenings (fixing straps) after a short drive and then at regular intervals.
- Take care when reversing and parking because of the greater length of the car.
- Check the distance between the bike rack/the bikes and the exhaust pipe(s) to avoid heat damages.
- Remove the bike rack when not in use as to save energy.
- Modifications to the bike rack and its components are not permitted. Immediately replace any worn or damaged part using original spare parts exclusively.
- The bike rack can be cleaned by using warm water and/or car shampoo. Store the bike rack in dry conditions at moderate temperatures.

The manufacturer is not responsible for damage caused by improper use of this product, nor for any objection made by the competent authorities with regard to the highway code, but shall only be responsible for manufacturing defects in the bike rack and accessory components.